



**unitar**  
United Nations Institute for Training and Research

**UNOSAT**

*Heavy Rainfall & Flood Event*

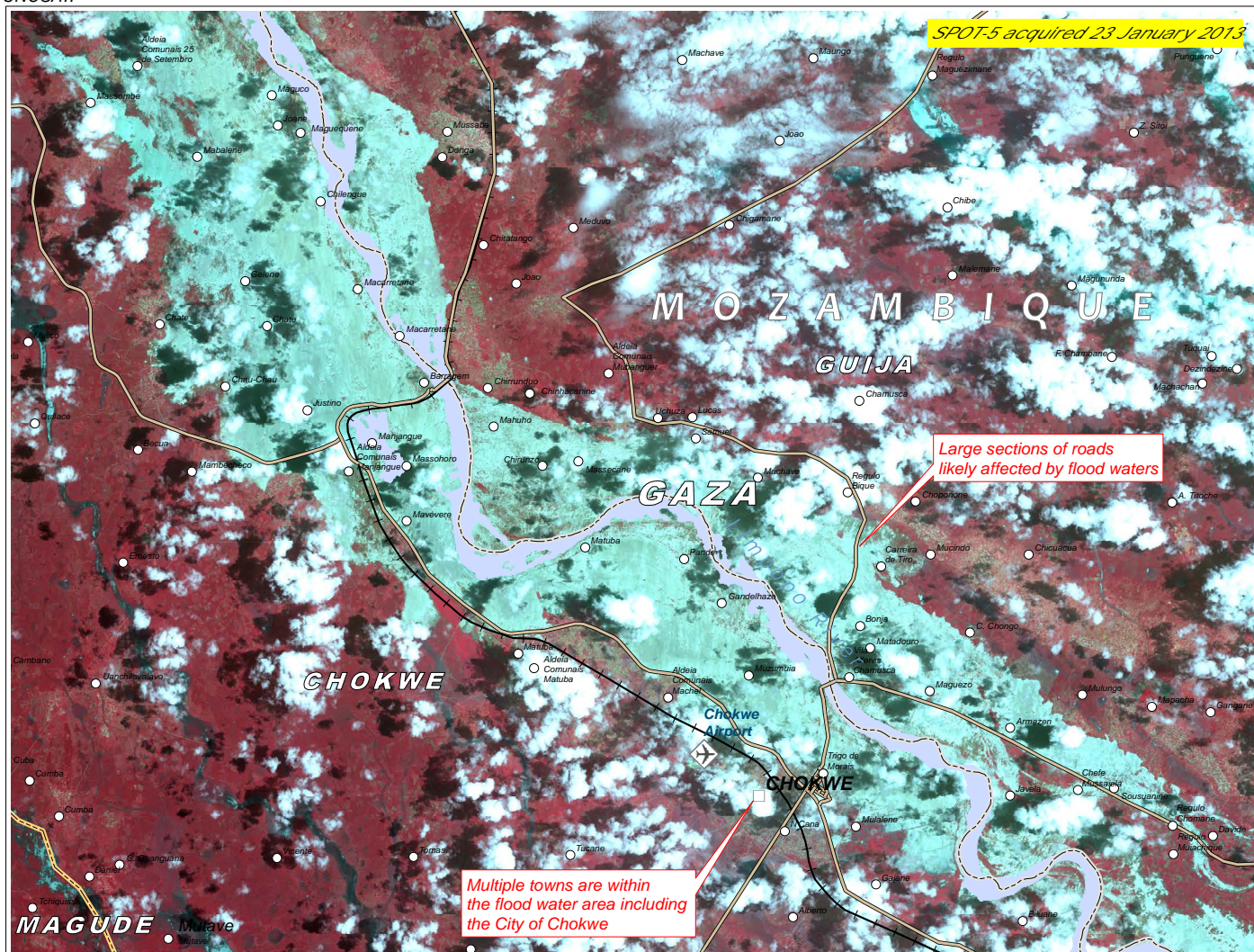


Production Date: 23/01/2013  
Version 1.0  
Activation Number:  
FL-20130121-MOZ

# SITUATION MAP: FLOODS OVER CHOKWE & GUIJA DISTRICT, GAZA PROVINCE, MOZAMBIQUE



This map illustrates satellite-detected areas flood waters along the Limpopo River in the Guija and Chokwe districts of Gaza Province, Mozambique, as detected by SPOT-5 imagery acquired 23 January 2013. Multiple villages including the city of Chokwe appear to be within the flood zone along the river and are likely affected by the flood waters, indicated by the SPOT imagery in blue. Please note that the red coloring in the imagery represents vegetation. Sections of road and railroad are also potentially affected, in addition to the Chokwe airport. This is a preliminary analysis & has not yet been validated in the field. Please send ground feedback to UNITAR / UNOSAT.



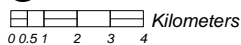
Copyright CNES 2013

**LEGEND**

- City
- Town
- ✈ Airport
- Roads
- +++ Railroad
- International Border
- Province
- District
- Pre-Crisis Water Extent

Center Coordinates: 32°56'29.65"E 24°26'17.58"S

Map Scale for A4: 1:228,390



UNITAR / UNOSAT  
unosat@unitar.org  
Palais des Nations,  
Geneva, Switzerland  
T: +41 22 767 4020  
24/7 hotline: +41 76 487 4998  
www.unitar.org/unosat

Satellite Data: SPOT-5  
Imagery Dates: 23 January 2013  
Resolution: 10m  
Copyright: CNES 2013  
Source: CNES  
Road Data: Google Map Maker / OSM / ESRI  
Other Data: USGS, NASA, NGA, ESRI

Analysis: UNITAR / UNOSAT  
Production: UNITAR / UNOSAT  
Analysis conducted with ArcGIS v10.1  
Coordinate System: WGS 1984 UTM zone 36S  
Projection: Transverse Mercator  
Datum: WGS 1984  
Units: Meter

Disaster coverage by the International Charter 'Space and Major Disasters'. For more information on the Charter, which is about assisting the disaster relief organizations with multi-satellite data and information, visit [www.disasterscharter.org](http://www.disasterscharter.org)



The depiction and use of boundaries, geographic names and related data shown here are not warranted to be error-free nor do they imply official endorsement or acceptance by the United Nations. UNOSAT is a program of the United Nations Institute for Training and Research (UNITAR), providing satellite imagery and related geographic information, research and analysis to UN humanitarian and development agencies and their implementing partners.

This work by UNITAR/UNOSAT is licensed under a Creative Commons Attribution-NonCommercial-ShareAlike 3.0 Unported License.